



CCFMS

Serving Clubs in Central Canada Since 1969



Pictures by P Anderson 2009, G Gevaert 2015, P Lee 2014



Votorantim Cimentos - Bowmanville Cement Plant St Marys Cement - Bowmanville Quarry

400 Waverly Road South, Bowmanville, Ontario

Sundays usually May/June (spring) & Oct (fall) trips

Field Trip Leader: Kevin Kidd

Please arrive by 8:30 am for Safety Talk.

Entry to the quarry approx 9:00 am.

Sign-in & Sign-out procedures, tags for cars, and **FULL SAFETY GEAR** (this is a working quarry).

Original document link: <http://www.ccfms.ca/Events/Bowmanville.html>

Directions to Bowmanville Quarry

400 Waverly Road South, Bowmanville, Ontario

Latitude & Longitude: 43°53'04.2"N 78°41'58.3"W

Latitude & Longitude (Decimal Degrees): 43.884503, -78.699519

Exit the 401 at Regional Road 57 / Waverley Road / Bowmanville Road

Turn east (left) onto Energy Drive (stop sign).

Turn south (right) onto Waverley Road **now called Bowmanville Road** (stop sign) for 250 metres (where you will see the St Mary's Cement sign).

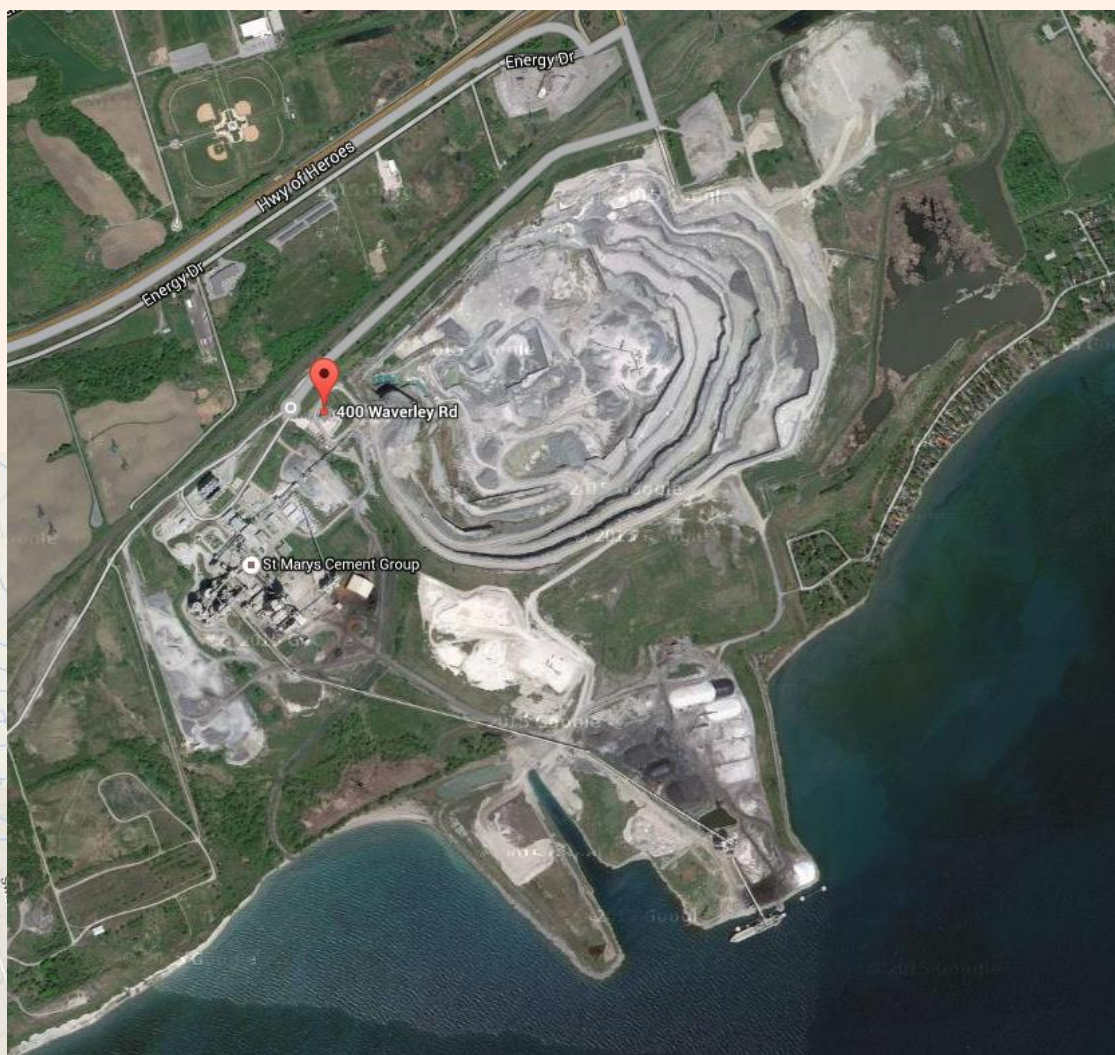
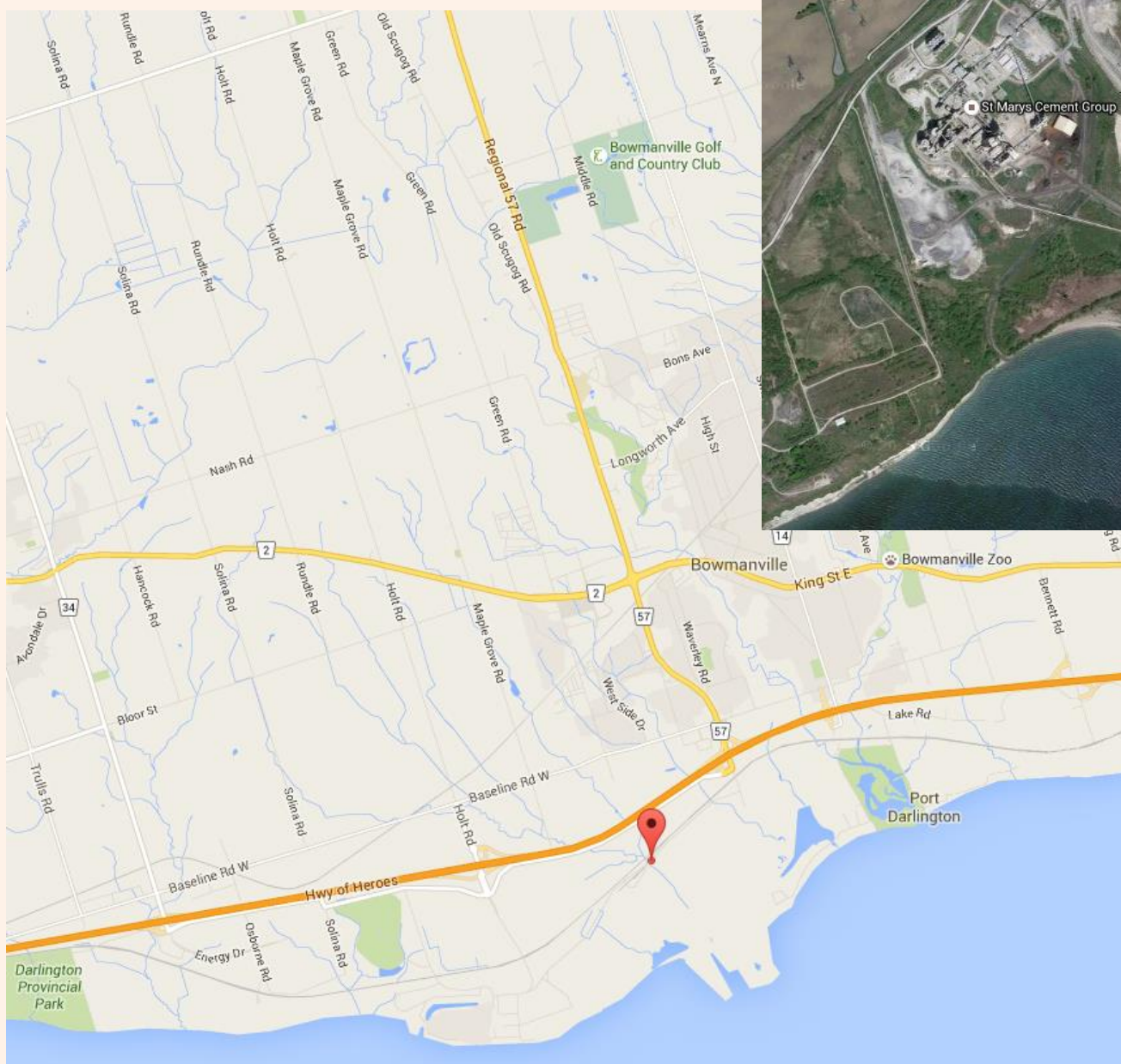
Turn right again (west) and drive 1.2 km, you should see the office and the entrance to the quarry.

Turn left into the parking lot (you should be able to see other participants).

After the safety talk you will drive in a convoy into the quarry, directly to the designated collecting sites within the quarry.

However, this may change if there is work being done that day in a designated spot.

Maps to Bowmanville Cement Plant



Satellite map of Bowmanville Cement Plant



CCFMS

Serving Clubs in Central Canada Since 1969



Pictures by P Anderson 2009, G Gevaert 2015, P Lee 2014



Votorantim Cimentos - Bowmanville Cement Plant St Marys Cement - Bowmanville Quarry

400 Waverly Road South, Bowmanville, Ontario

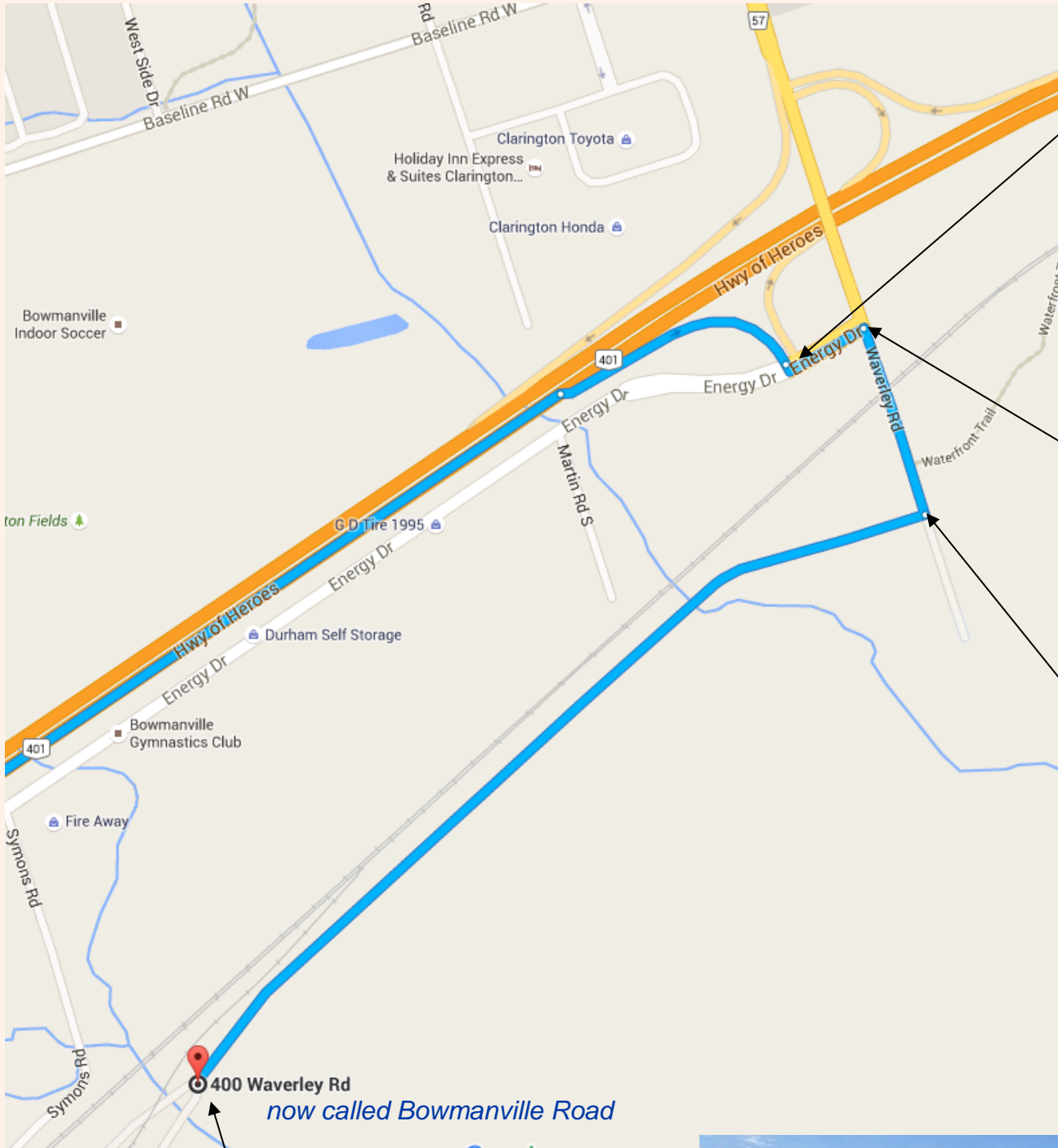
Sundays usually May/June (spring) & Oct (fall) trips

Field Trip Leader: Kevin Kidd

Please arrive by 8:30 am for Safety Talk.

Entry to the quarry approx 9:00 am.

Sign-in & Sign-out procedures, tags for cars, and **FULL SAFETY GEAR** (this is a working quarry).



office & parking lot - meet-up spot

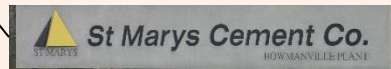
arrivals at the parking lot
2016 pic by A Pollock



corner of Hwy 401 exit & Energy Drive



corner of Energy Dr & Bowmanville Rd



entrance to Bowmanville Quarry